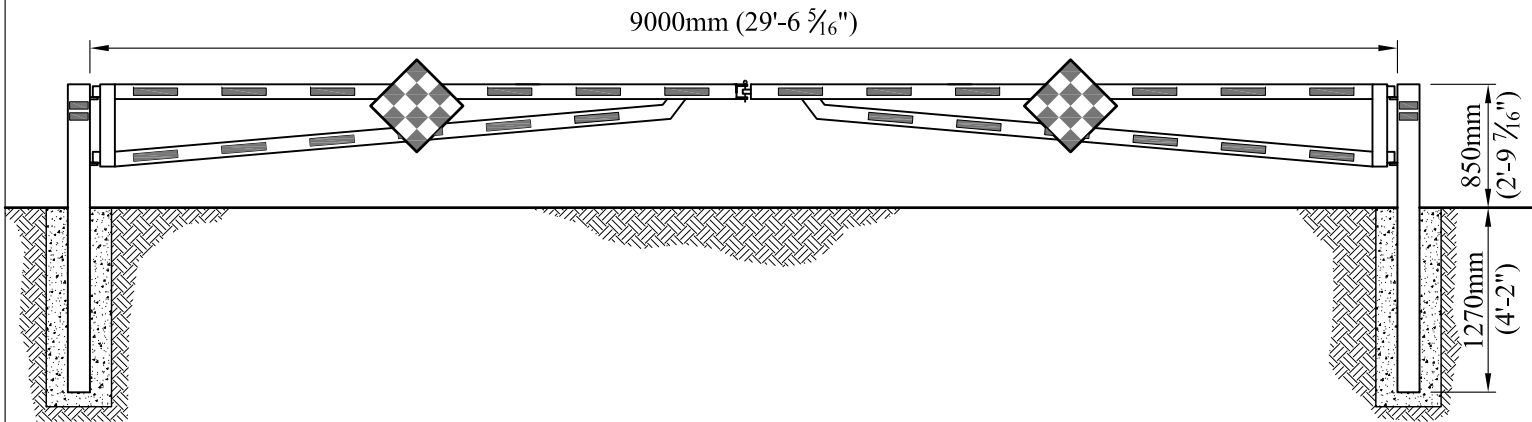
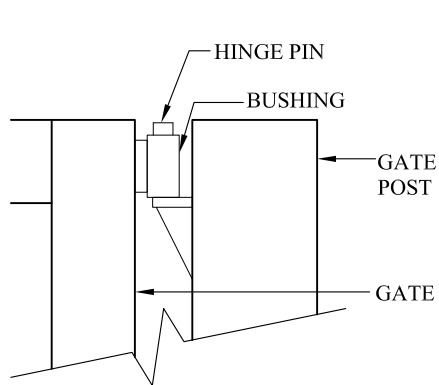


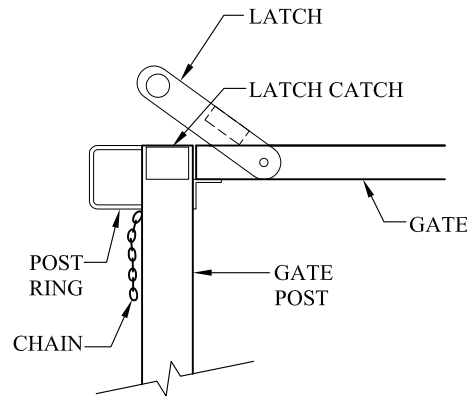
SINGLE SWING GATE ELEVATION



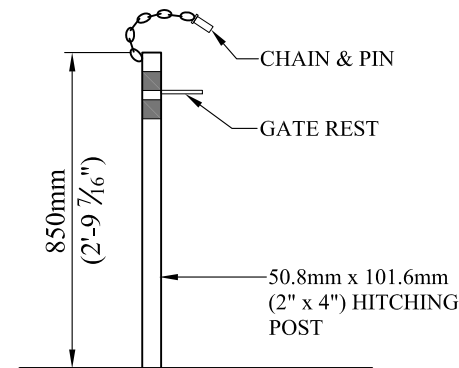
DOUBLE SWING GATE ELEVATION



HINGE ASSEMBLY



LATCH ASSEMBLY



HITCHING POST DETAIL

EMERGENCY/ MAINTENANCE GATES - SERIES B (EGB)

SPECIFICATIONS

STEEL TYPE:

- GATE FRAME: 101.6 x 50.8mm (4" x 2") RECTANGULAR TUBE
 - POSTS: 152.4 x 101.6mm (6" x 4") RECTANGULAR TUBE
 - HITCHING POST: 101.6 x 50.8mm (4" x 2") RECTANGULAR TUBE.
- USED TO HOLD GATE IN AN OPEN POSITION.

STEEL FINISH:

- GALVANIZED AND POWDER COAT
- 3 STEP POWDER COAT PROCESS:

1. SURFACE PREPARATION-
SANDBLAST METAL
2. PRIME COAT- APPLICATION OF
ZINC RICH PRIMER
3. TOP COAT- FINAL COATING IS
BAKED ON FOR THE BEST IN LONG
LASTING DURABILITY

SAFETY FEATURE:

- 304.8 x 50.8mm (12" x 2") STRIPS
OF RED REFLECTIVE TAPE TO
ENSURE VISIBILITY

NOTE:

- CUSTOM SIZES ALSO
AVAILABLE UPON REQUEST

STEEL FINISH AVAILABLE IN A
WIDE VARIETY OF COLORS.
REFER TO COLOR CHART FOR
MORE INFORMATION.



4111-17th Street SE Calgary, AB T2G 3W5
Ph# 569-8180 Fax# 272-4544
e-mail: reception.cpl@telus.net
www.custompark.com