

## VARDELL SERIES RAILING & VALANCE OPTIONS

### SPECIFICATIONS

#### STEEL:

- HORIZONTAL RAILS: 38mm x 38mm (1 1/2" x 1 1/2") SQUARE TUBE.

- PICKETS: 13mm x 13mm (1/2" x 1/2") SQUARE TUBE.

- CIRCLES: 13mm x 13mm (1/2" x 1/2") SQUARE TUBE.

- X PATTERN: 13mm x 13mm (1/2" x 1/2") SQUARE TUBE.

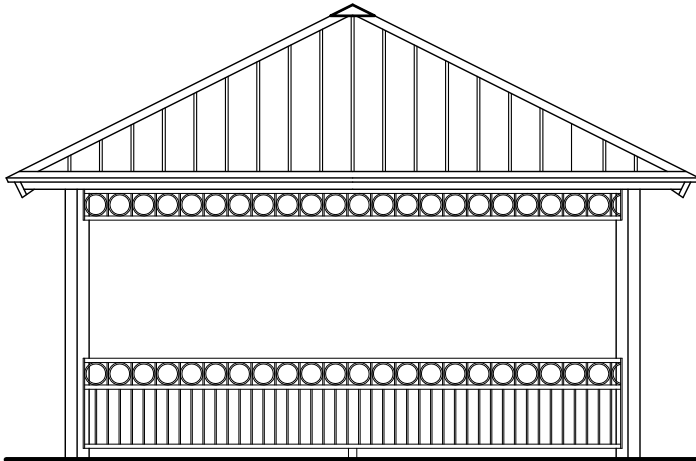
#### STEEL FINISH:

- 3 STEP POWDER COAT PROCESS:

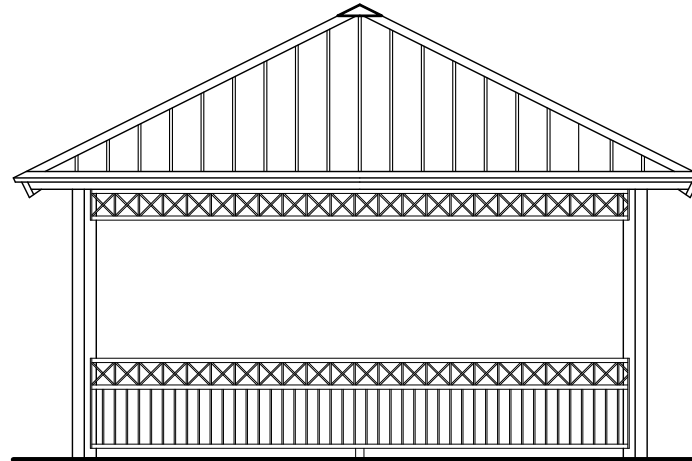
1. SURFACE PREPARATION- SANDBLAST METAL
2. PRIME COAT- APPLICATION OF ZINC RICH PRIMER
3. TOP COAT- FINAL COATING IS BAKED ON FOR THE BEST IN LONG LASTING DURABILITY

AVAILABLE IN A WIDE VARIETY OF COLORS. REFER TO COLOR CHART FOR MORE INFORMATION.

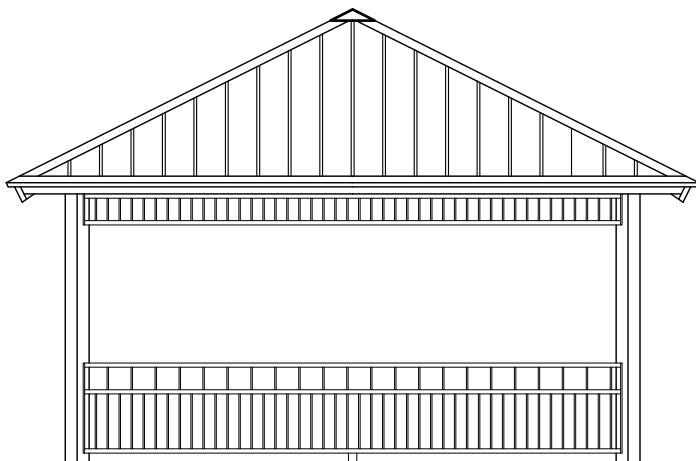
GENERAL CONCEPT ONLY.  
NOT FOR CONSTRUCTION.



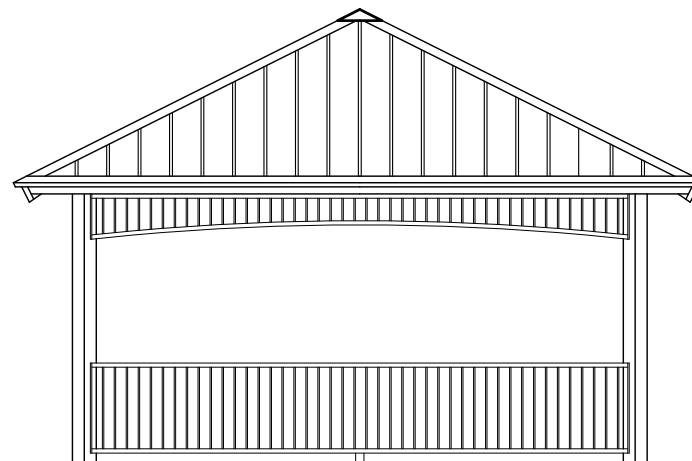
OPTION 1



OPTION 2



OPTION 3



OPTION 4



4111-17th Street SE Calgary, AB T2G 3W5  
Ph# 569-8180 Fax# 272-4544  
e-mail: [reception.cpl@telus.net](mailto:reception.cpl@telus.net)  
[www.custompark.com](http://www.custompark.com)