

METAL BEAM PICNIC SHELTER - 20' x 16'

SPECIFICATIONS

STEEL:

- COLUMNS: 152mm x 152mm
(6"x6") SQUARE TUBE.

- BEAMS: 203mm x 152mm (8"x6")
SQUARE TUBE.

- RAFTERS: 127mm x 127mm
(5"x5") SQUARE TUBE

- ROOF: PRE-FINISHED METAL
PANEL ATTACHED DIRECTLY
TO METAL BEAM PICNIC
SHELTER FRAME.

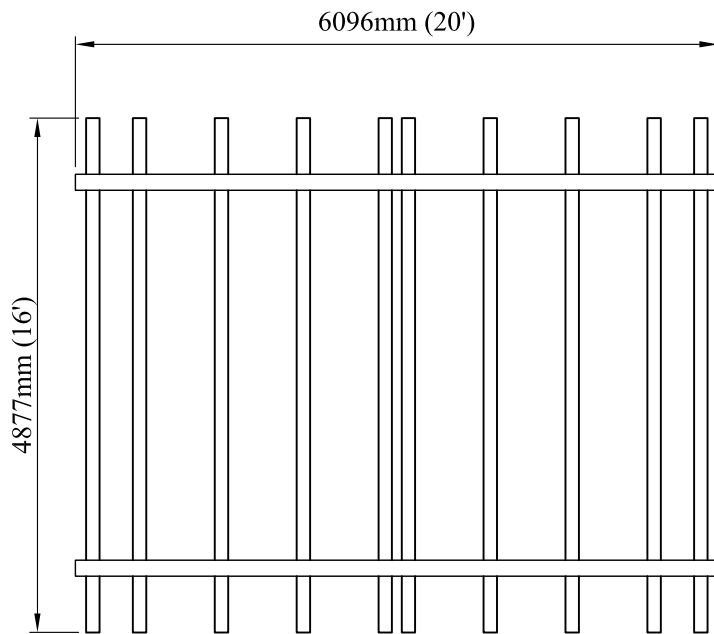
STEEL FINISH:

- 3 STEP POWDER COAT
PROCESS:

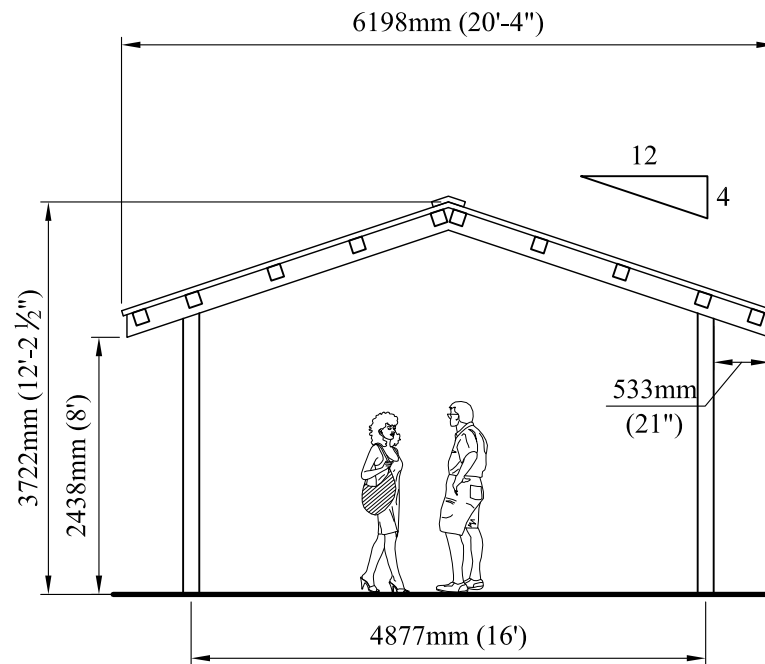
1. SURFACE PREPARATION-
SANDBLAST METAL
2. PRIME COAT- APPLICATION OF
ZINC RICH PRIMER
3. TOP COAT- FINAL COATING IS
BAKED ON FOR THE BEST IN LONG
LASTING DURABILITY

AVAILABLE IN A WIDE
VARIETY OF COLORS. REFER
TO COLOR CHART FOR MORE
INFORMATION.

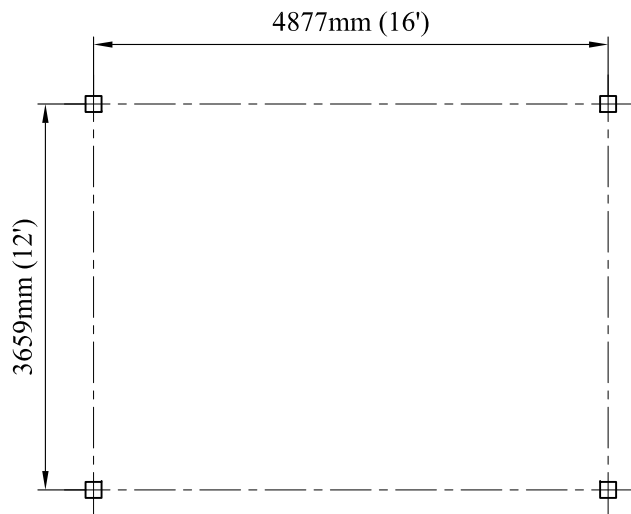
GENERAL CONCEPT ONLY.
NOT FOR CONSTRUCTION.



ROOF PLAN



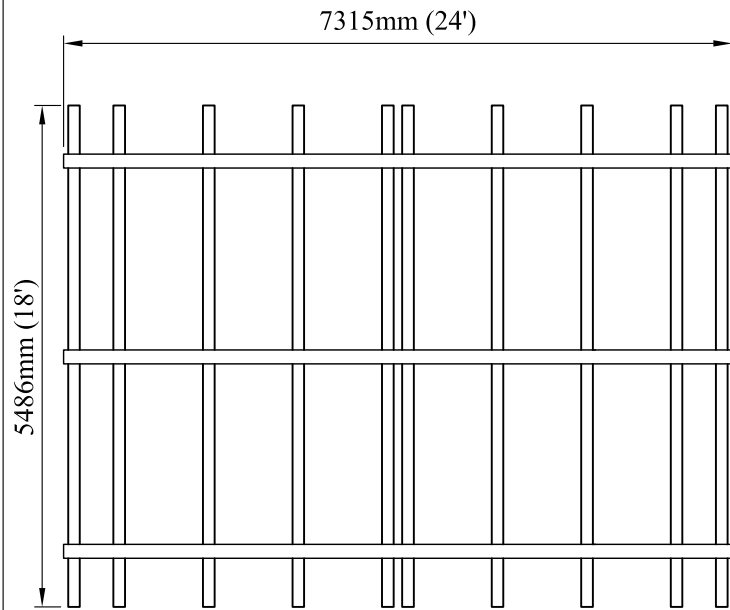
ELEVATION



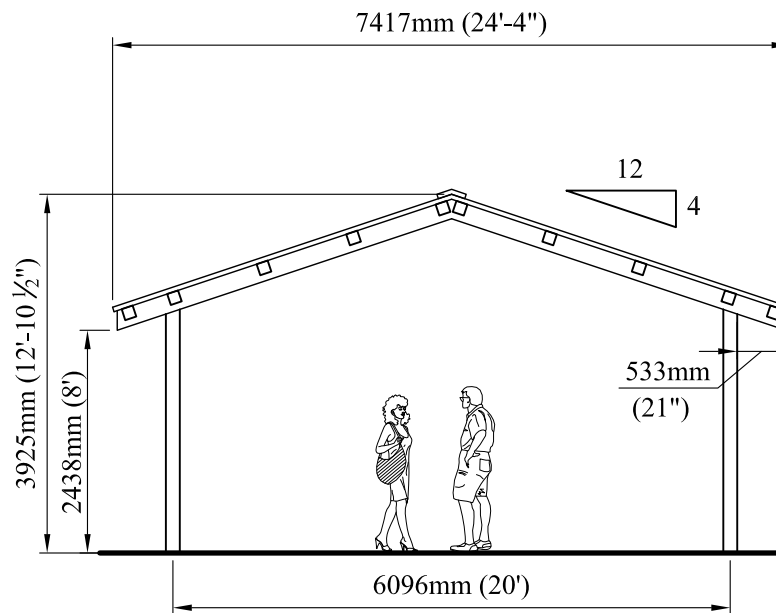
COLUMN LAYOUT



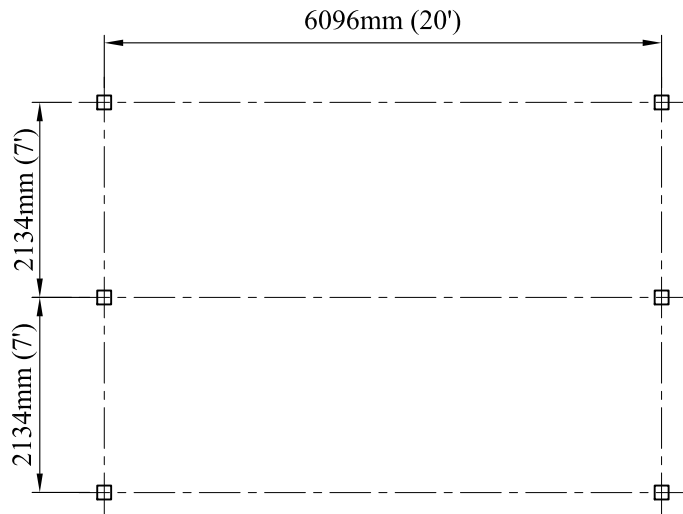
4111-17th Street SE Calgary, AB T2G 3W5
Ph# 569-8180 Fax# 272-4544
e-mail: reception.cpl@telus.net
www.custompark.com



ROOF PLAN



ELEVATION



COLUMN LAYOUT

METAL BEAM PICNIC SHELTER - 24' x 18'

SPECIFICATIONS

STEEL:

- COLUMNS: 152mm x 152mm (6"x6") SQUARE TUBE.
- BEAMS: 203mm x 152mm (8"x6") SQUARE TUBE.
- RAFTERS: 127mm x 127mm (5"x5") SQUARE TUBE
- ROOF: PRE-FINISHED METAL PANEL ATTACHED DIRECTLY TO METAL BEAM PICNIC SHELTER FRAME.

STEEL FINISH:

- 3 STEP POWDER COAT PROCESS:
- 1. SURFACE PREPARATION- SANDBLAST METAL
- 2. PRIME COAT- APPLICATION OF ZINC RICH PRIMER
- 3. TOP COAT- FINAL COATING IS BAKED ON FOR THE BEST IN LONG LASTING DURABILITY

AVAILABLE IN A WIDE VARIETY OF COLORS. REFER TO COLOR CHART FOR MORE INFORMATION.

GENERAL CONCEPT ONLY.
NOT FOR CONSTRUCTION.



4111-17th Street SE Calgary, AB T2G 3W5
Ph# 569-8180 Fax# 272-4544
e-mail: reception.cpl@telus.net
www.custompark.com

METAL BEAM PICNIC SHELTER - 28' x 20'

SPECIFICATIONS

STEEL:

- COLUMNS: 152mm x 152mm
(6"x6") SQUARE TUBE.

- BEAMS: 203mm x 152mm (8"x6")
SQUARE TUBE.

- RAFTERS: 127mm x 127mm
(5"x5") SQUARE TUBE

- ROOF: PRE-FINISHED METAL
PANEL ATTACHED DIRECTLY
TO METAL BEAM PICNIC
SHELTER FRAME.

STEEL FINISH:

- 3 STEP POWDER COAT
PROCESS:

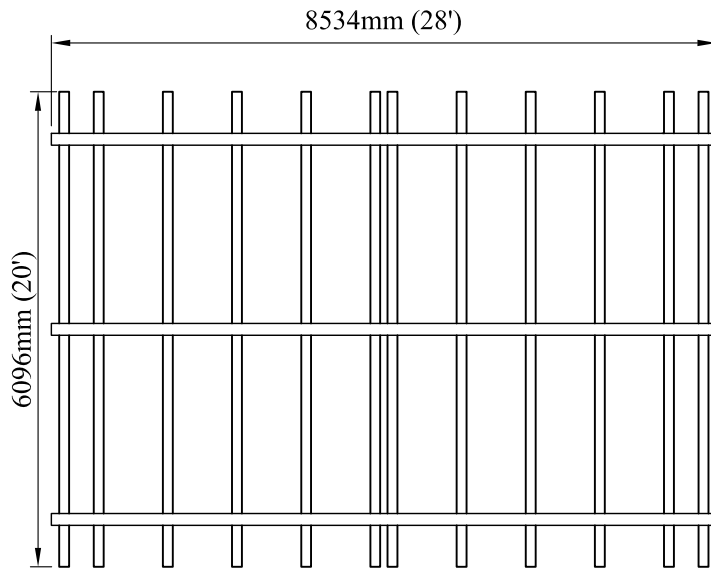
1. SURFACE PREPARATION-
SANDBLAST METAL
2. PRIME COAT- APPLICATION OF
ZINC RICH PRIMER
3. TOP COAT- FINAL COATING IS
BAKED ON FOR THE BEST IN LONG
LASTING DURABILITY

AVAILABLE IN A WIDE
VARIETY OF COLORS. REFER
TO COLOR CHART FOR MORE
INFORMATION.

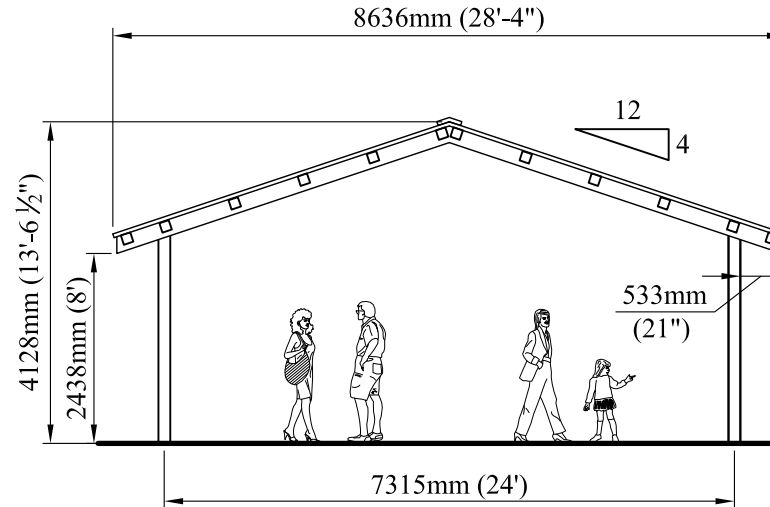
GENERAL CONCEPT ONLY.
NOT FOR CONSTRUCTION.



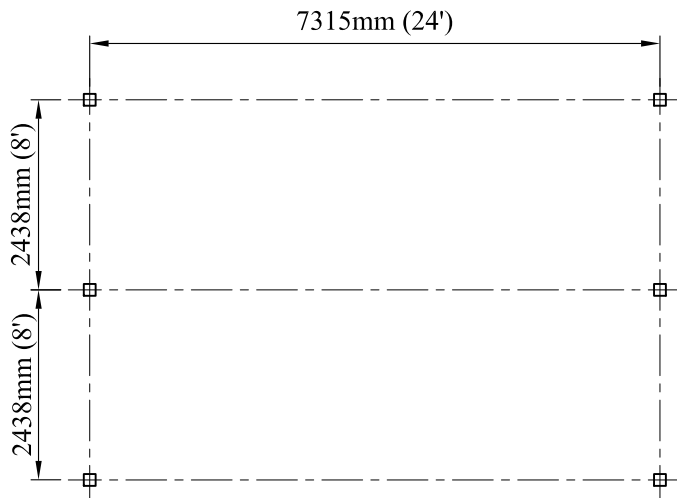
4111-17th Street SE Calgary, AB T2G 3W5
Ph# 569-8180 Fax# 272-4544
e-mail: reception.cpl@telus.net
www.custompark.com



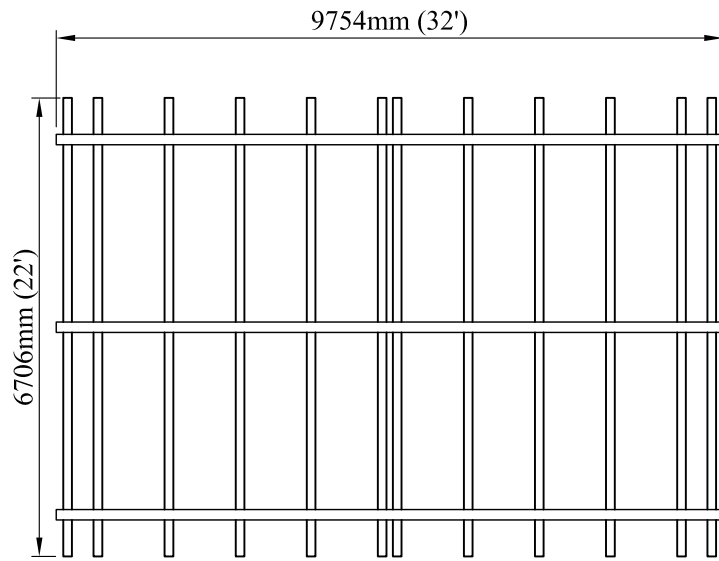
ROOF PLAN



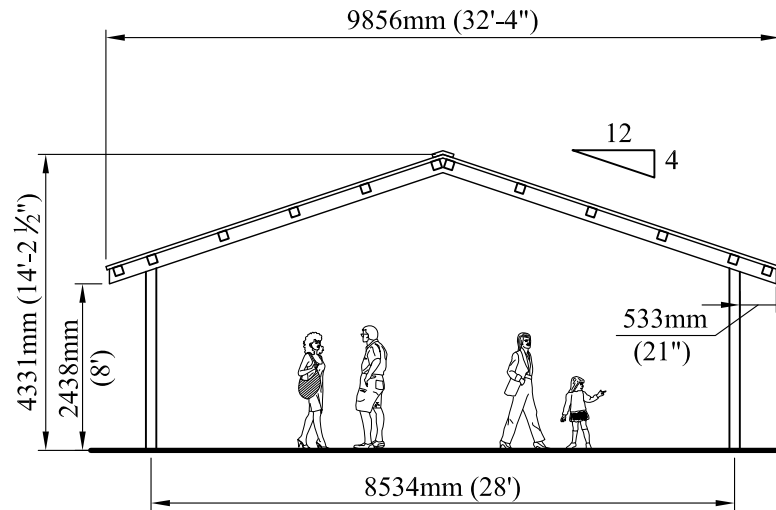
ELEVATION



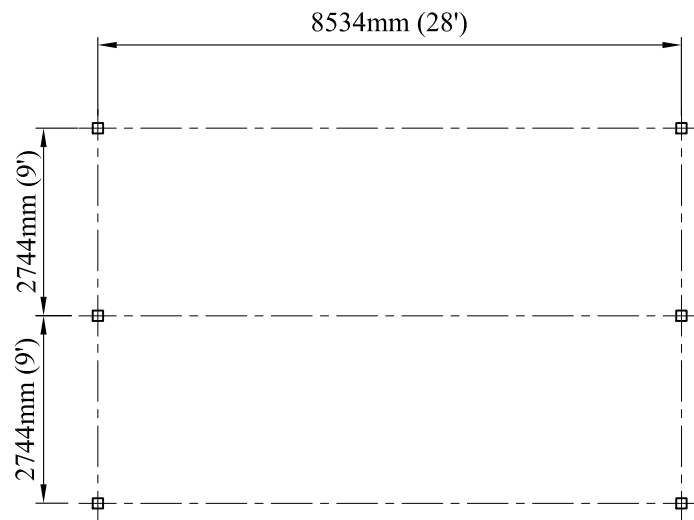
COLUMN LAYOUT



ROOF PLAN



ELEVATION



COLUMN LAYOUT

METAL BEAM PICNIC SHELTER - 32' x 22'

SPECIFICATIONS

STEEL:

- COLUMNS: 152mm x 152mm (6"x6") SQUARE TUBE.

- BEAMS: 203mm x 152mm (8"x6") SQUARE TUBE.

- RAFTERS: 127mm x 127mm (5"x5") SQUARE TUBE

- ROOF: PRE-FINISHED METAL PANEL ATTACHED DIRECTLY TO METAL BEAM PICNIC SHELTER FRAME.

STEEL FINISH:

- 3 STEP POWDER COAT

PROCESS:

1. SURFACE PREPARATION- SANDBLAST METAL
2. PRIME COAT- APPLICATION OF ZINC RICH PRIMER
3. TOP COAT- FINAL COATING IS BAKED ON FOR THE BEST IN LONG LASTING DURABILITY

AVAILABLE IN A WIDE VARIETY OF COLORS. REFER TO COLOR CHART FOR MORE INFORMATION.

GENERAL CONCEPT ONLY.
NOT FOR CONSTRUCTION.

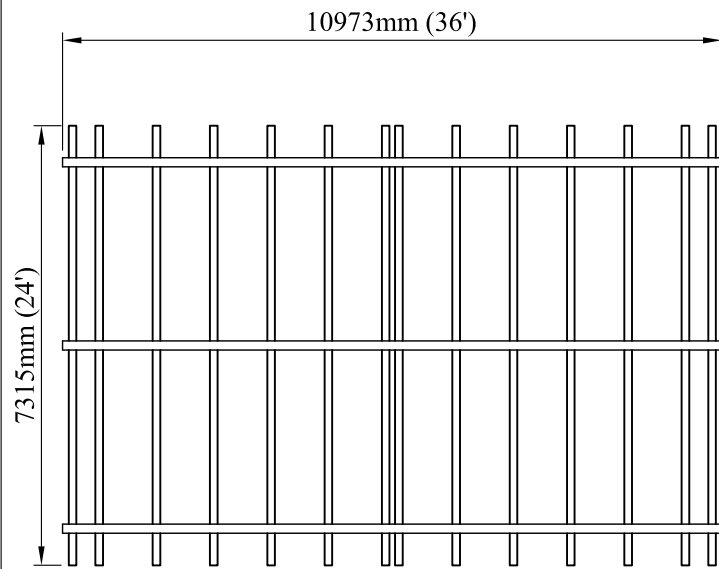


4111-17th Street SE Calgary, AB T2G 3W5

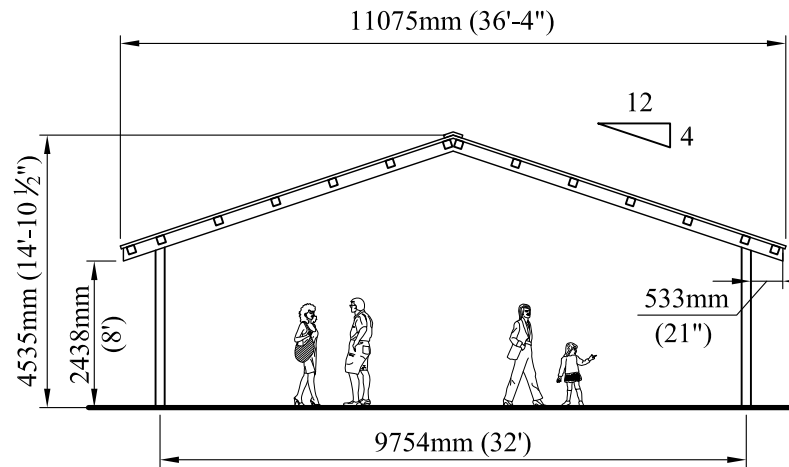
Ph# 569-8180 Fax# 272-4544

e-mail: reception.cpl@telus.net

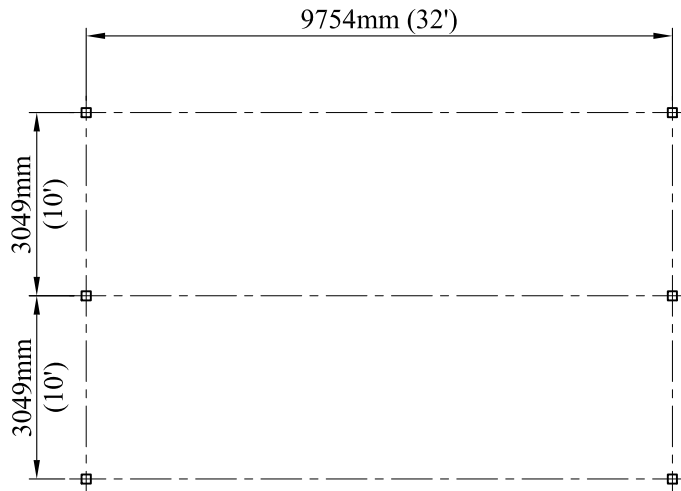
www.custompark.com



ROOF PLAN



ELEVATION



COLUMN LAYOUT

METAL BEAM PICNIC SHELTER - 36' x 24'

SPECIFICATIONS

STEEL:

- COLUMNS: 152mm x 152mm (6"x6") SQUARE TUBE.

- BEAMS: 203mm x 152mm (8"x6") SQUARE TUBE.

- RAFTERS: 127mm x 127mm (5"x5") SQUARE TUBE

- ROOF: PRE-FINISHED METAL PANEL ATTACHED DIRECTLY TO METAL BEAM PICNIC SHELTER FRAME.

STEEL FINISH:

- 3 STEP POWDER COAT

PROCESS:

1. SURFACE PREPARATION- SANDBLAST METAL
2. PRIME COAT- APPLICATION OF ZINC RICH PRIMER
3. TOP COAT- FINAL COATING IS BAKED ON FOR THE BEST IN LONG LASTING DURABILITY

AVAILABLE IN A WIDE VARIETY OF COLORS. REFER TO COLOR CHART FOR MORE INFORMATION.

GENERAL CONCEPT ONLY.
NOT FOR CONSTRUCTION.



4111-17th Street SE Calgary, AB T2G 3W5

Ph# 569-8180 Fax# 272-4544

e-mail: reception.cpl@telus.net

www.custompark.com